

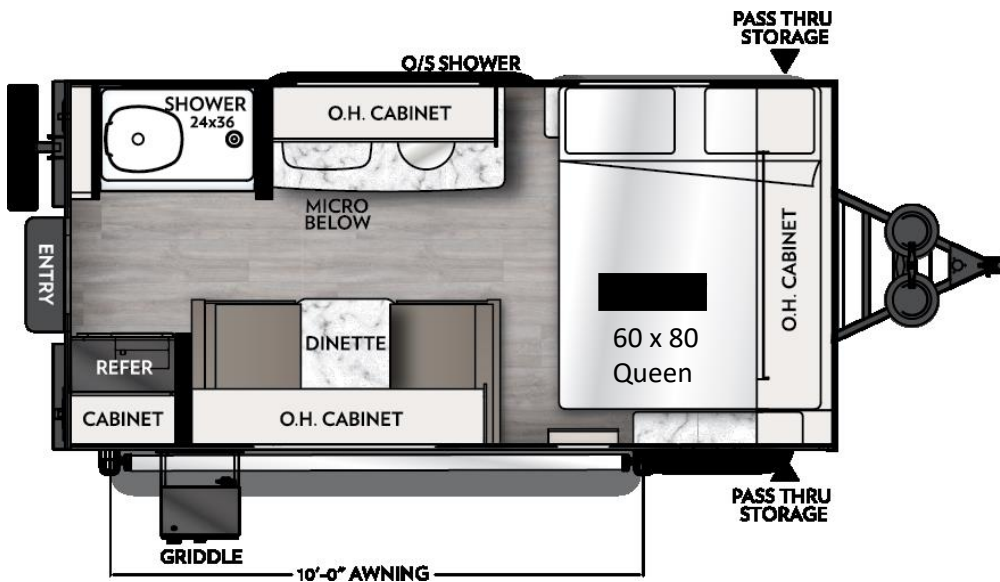
REMOTE

Coachmen

GOING REMOTE NEVER FELT SO GOOD

New Rear Entrance

15R



Key Floor Plan Features

- ✓ 7' Narrow Body
- ✓ Under 19' Overall Length
- ✓ Under 3,000lbs. UVW
- ✓ Frameless Oval Windows
- ✓ 16" All-Terrain Tires
- ✓ 200W Solar Panel; 30amp Charge Controller
- ✓ Bike Rack
- ✓ 12V Heat pads for Tanks
- ✓ Wireless, Removable Bluetooth Speaker
- ✓ Includes Griddle & Prep Bar
- ✓ On Demand Instant Hot Water Heater

Super Solar Option

- ✓ 1-2000W Inverter
- ✓ 2-100Ah 12V LiFePO4 Battery
- ✓ 2-200W Solar Panels
- ✓ 1-30A MPPT Solar Charge Controller



Step Light!



COACHMEN

****AVAILABLE NOW****