



REMOTE

Coachmen

LIGHTWEIGHT. EASY TO TOW.



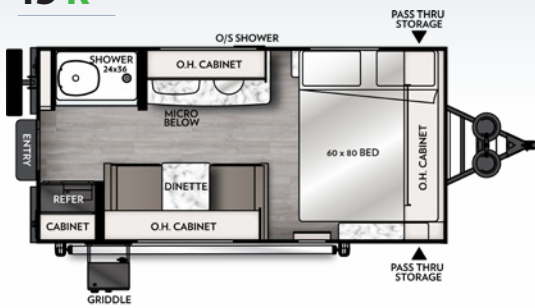
GOING REMOTE NEVER FELT SO GOOD.


COACHMEN

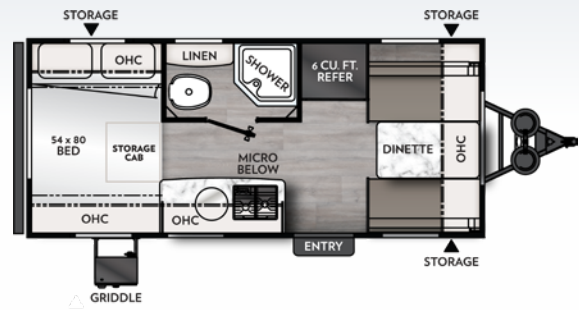


A FOREST RIVER® BRAND

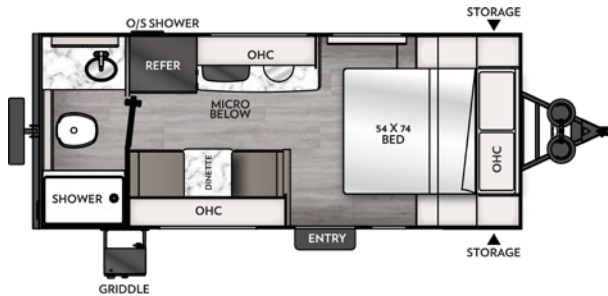
15 R



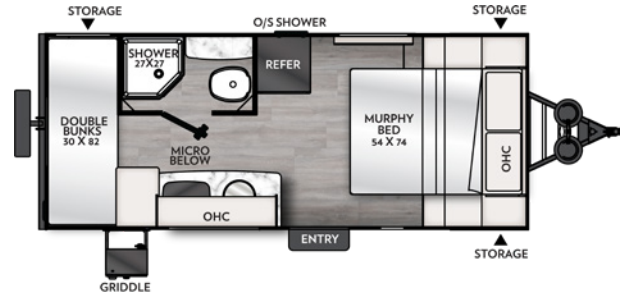
16 R



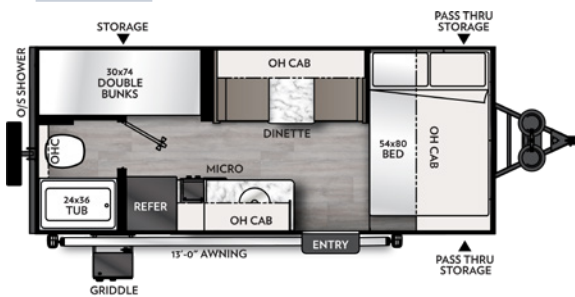
17 R



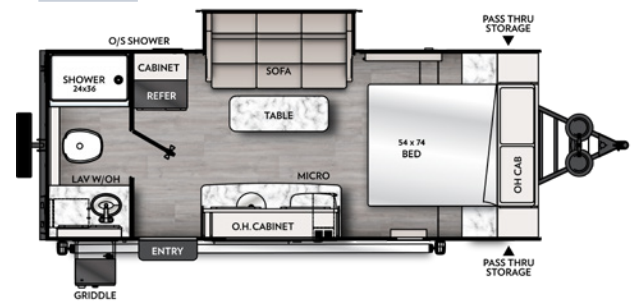
18 R



18.2 R



19 R



	15 R	16 R	17 R	18 R	18.2 R	19 R
Hitch Weight	374	376	431	454	416	378
Carrying Capacity	822	746	1,368	1,220	1,304	944
UVW	2,978	3,054	3,178	3,274	3,196	3,556
GVWR	3,800	3,800	4,500	4,500	4,500	4,500
Exterior Length (Includes Bumper to Hitch)	18' 3"	19' 7"	20' 8"	20' 8"	20' 8"	21' 8"
Exterior Height (Includes A/C)	9' 10"	9' 10"	9' 10"	9' 10"	9' 10"	9' 10"
Interior Height (Coach)	77"	77"	77"	77"	77"	77"
Awning Length	10'	12'	13'	13'	13'	14'
Fresh Water Capacity (gal.)	52	52	52	52	52	52
Grey Water Capacity (gal.)	27	35	35	35	35	35
Waste Water Capacity (gal.)	27	35	35	35	35	35



423 N. Main Street • P.O. Box 30 • Middlebury, IN 46540
To learn more about Coachmen RV and our products and see how Coachmen is making the easy life easier, visit coachmenrv.com/remote



Each Forest River RV is weighed at the manufacturing facility prior to shipping. A label identifying the unloaded vehicle weight of the actual unit and the cargo carrying capacity is applied to every Forest River RV prior to leaving our facilities. The load capacity of your unit is designated by weight, not by volume, so you cannot necessarily use all available space when loading your unit. All information contained in this brochure is believed to be accurate at the time of publication. However, during the model year, it may be necessary to make revisions and Forest River, Inc., reserves the right to make all such changes without notice, including prices, colors, materials, equipment and specifications as well as the addition of new models and the discontinuance of models shown in this brochure. Therefore, please consult with your Forest River dealer and confirm the existence of any materials, design or specifications that are material to your purchase decision. ©2024 Apex by Coachmen RV, a Division of Forest River, Inc., a Berkshire Hathaway company. All rights reserved. CRM 2254-1/24