

SOLAR STANDARD  
ON ALL UNITS



*Emerald Rated*

ULTRA LITE & NANO  
TRAVEL TRAILERS



ULTRA LITE & NANO  
TRAVEL TRAILERS

APEX

COACHMEN





190 RBS

# APEX

NANO OFF GRID

HIT THE ROAD TO ADVENTURE WITH  
APEX'S LIGHT-WEIGHT TOWABLE RVS



190 RBS



190 RBS



208 BHS

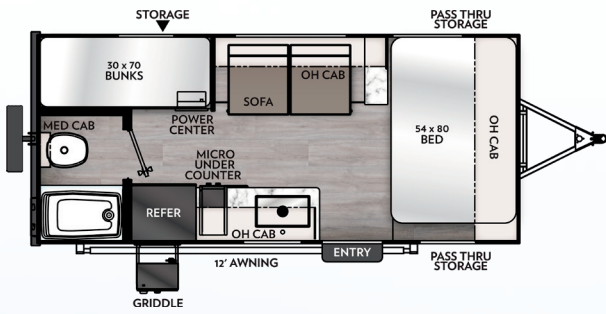
## LIGHT & FUN

Travel is easy with Apex style and comfort. These narrow-body trailers are ideal for towing with half ton trucks and most smaller SUVs, with weights ranging from 3,000 lbs. up to 4,500 lbs. All Nano floor plans are designed with rich, warm interiors, full-sized bathrooms, contemporary cabinetry, fabrics and flooring.

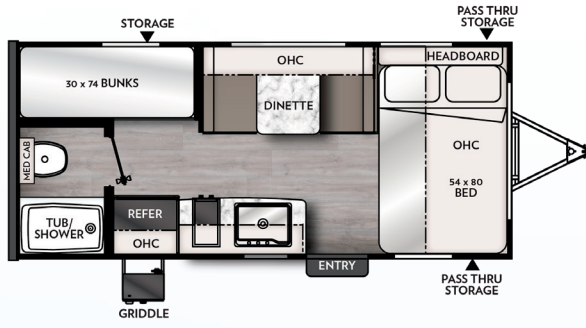
The 186 BH, 203 RBK, and 208 BHS come standard with a 60" x 80" queen bed, or you can add an optional Murphy Bed with Jack Knife sofa.



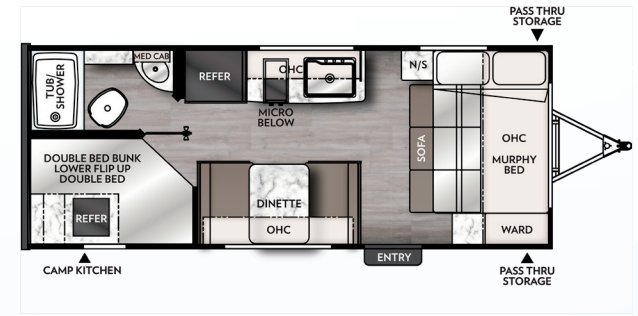
190 RBS



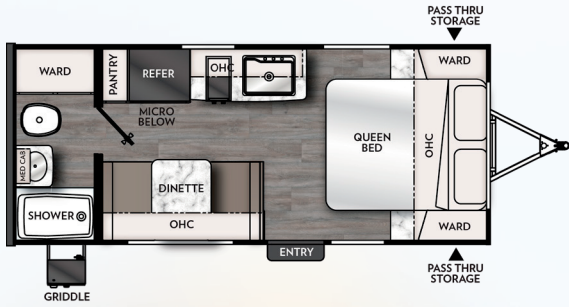
184 BH



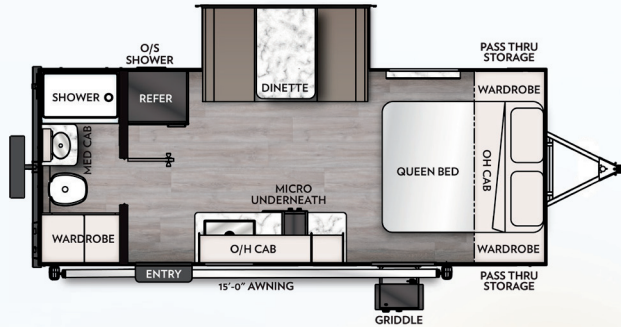
185 BH



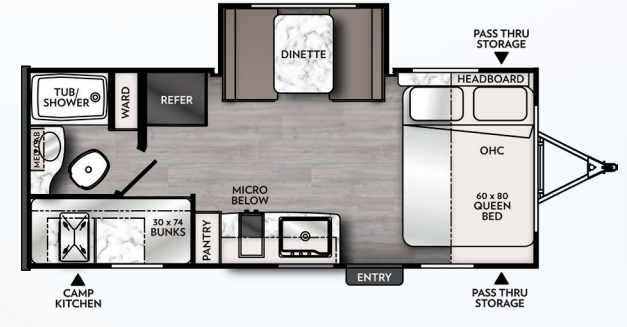
186 BH



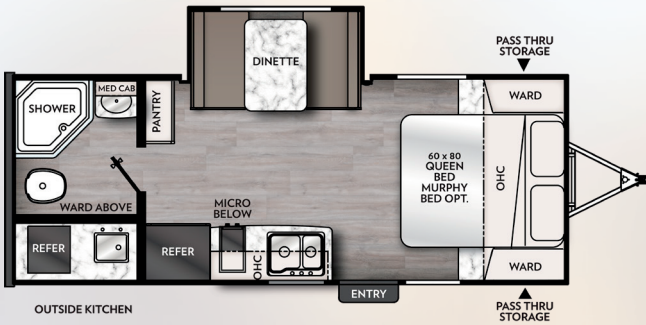
187 RB



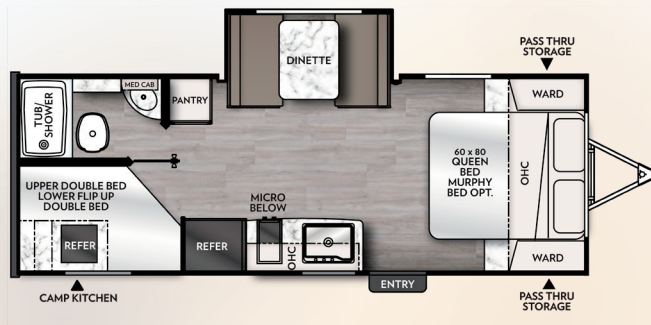
190 RBS



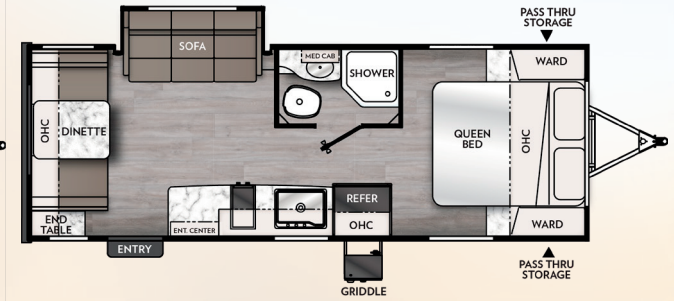
194 BHS



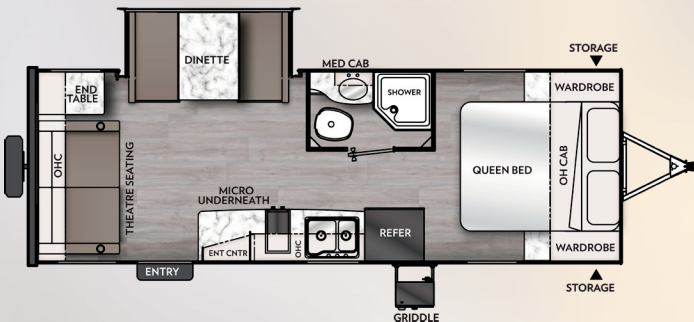
203 RBK



208 BHS



213 RDS



221 RLS

APEX NANO	184 BH	185 BH	186 BH	187 RB	190 RBS	194 BHS	203 RBK	208 BHS	213 RDS	221 RLS
Hitch Weight	410	414	446	462	461	554	478	526	556	546
Carrying Capacity	1,297	1,508	1,131	1,342	1,030	853	2,084	1,712	1,806	1,578
UWW	3,403	3,366	3,569	3,358	3,670	3,847	3,916	4,198	4,194	4,422
GVWR	4,700	4,700	4,700	4,700	4,700	4,800	6,000	6,000	6,000	6,000
Ext. Length (Incl. Bumper to Hitch)	20' 7"	20' 7"	22' 11.5"	21' 5"	22' 7.5"	22' 8"	23' 5"	24' 11"	25' 2"	26' 0"
Ext. Height (Incl. A/C)	10' 2"	9' 10"	9' 9"	9' 10"	10' 2"	9' 10"	9' 11"	9' 11"	9' 11"	9' 11"
Int. Height (Coach)	77"	77"	77"	77"	77"	77"	77"	77"	77"	77"
Awning Length	12'	12'	15'	12'	15'	14'	15'	14'	15'	15'
Fresh Water Capacity (gal.)	52	52	52	52	52	52	52	52	52	52
Grey Water Capacity (gal.)	27	27	27	27	35	27	35	35	35	35
Waste Water Capacity (gal.)	27	27	27	27	35	27	35	35	35	35

Refer to chart descriptions on back cover.



251 RBK

## LIGHTWEIGHT ADVENTURE

An Apex Travel Trailer does not just start off as a frame, walls and roof... it begins with an idea! Our belief is that getting the little things right is a BIG THING! The Apex UltraLite is not like other lightweight trailers. It is much smarter because we set new, higher standards for this innovative, truly lightweight trailer.

The 251 RBK is perfect for couples who like to kick back and relax with all the amenities of home. It's open concept living at its finest, with comfortable seating located directly across from the TV for a great view, and a booth dinette for those game nights.

*The outside kitchen is the perfect spot to grab some food and keep the fun going.*

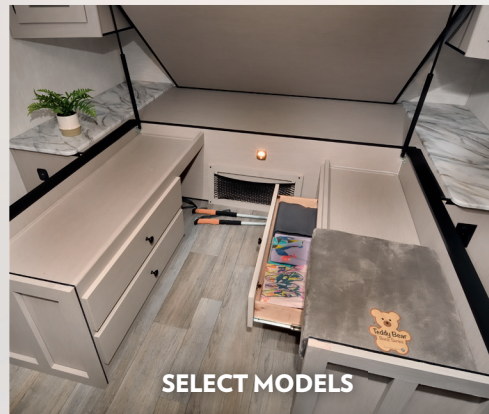
# APEX

## ULTRALITE

OUR MODERN INTERIORS ARE BEAUTIFULLY PAIRED WITH AN INNOVATIVE USE OF SPACE TO MAKE CAMPING COMFORTABLE AND EASY.

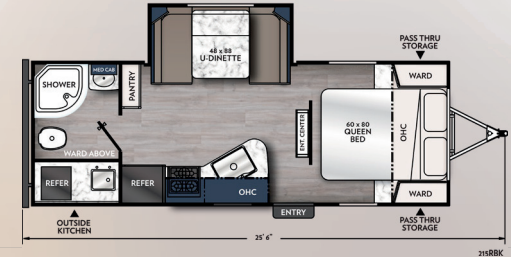


SELECT MODELS



SELECT MODELS

### 7.5' WIDE MODELS



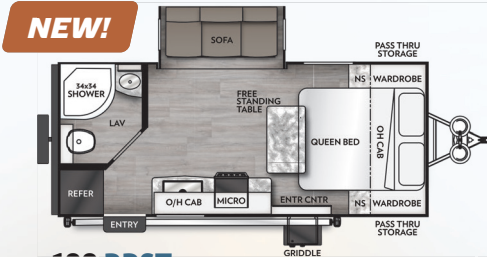
215 RBK



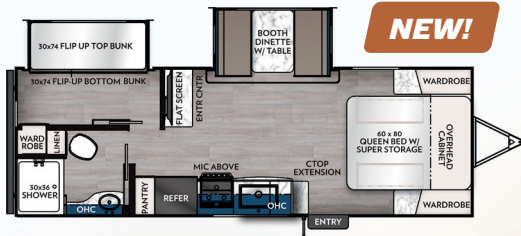
245 BHS

### 7.5' WIDES

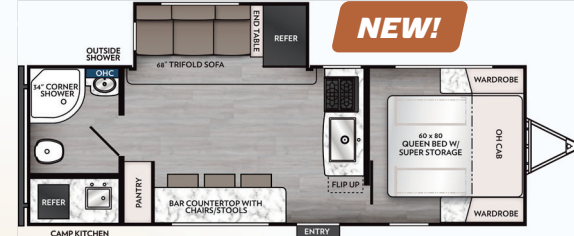
Apex	215 RBK	245 BHS
Hitch Weight	480	568
Carrying Capacity	1,470	1,311
UVW	4,530	4,689
GVWR	6,500	6,500
Ext. Length (Incl. Bumper to Hitch)	25' 6"	27' 8"
Ext. Height (Incl. A/C)	10' 2"	10' 2"
Int. Height (Coach)	78"	78"
Awning Length	13'	18'
Fresh Water Capacity [gal.]	52	52
Grey Water Capacity [gal.]	35	35
Waste Water Capacity [gal.]	35	35



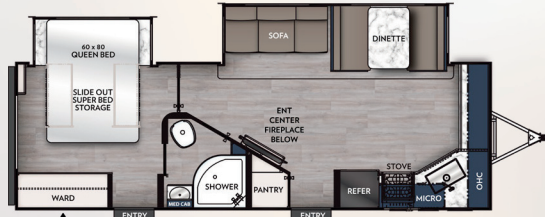
**188 RBST**



**241 BHS**



**242 BARV**



**243 FKS**



**251 RBK**



**256 BHS**



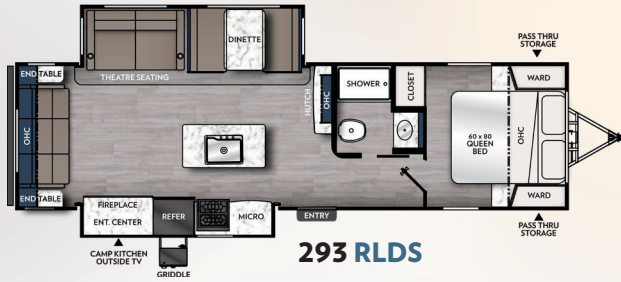
**264 RKS**



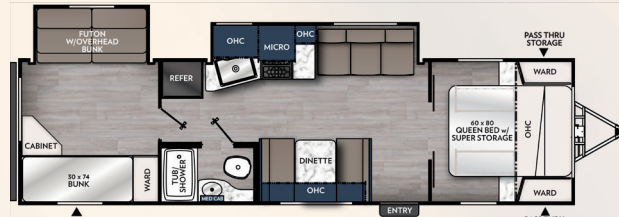
**266 BHS**



**291 TBSS**



**293 RLDS**



**300 BHS**



**Apex 8' WIDES**

	188 RBST	241 BHS	242 BARV	243 FKS	251 RBK	256 BHS	264 RKS	266 BHS	291 TBSS	293 RLDS	300 BHS
Hitch Weight	446	578	740	810	579	694	748	934	670	832	672
Carrying Capacity	2,135	1,914	1,828	1,654	2,016	2,128	1,714	1,520	1,510	1,360	1,625
UVW	4,365	4,586	5,772	5,906	4,984	5,472	5,886	6,080	6,090	6,440	5,975
GVWR	6,500	6,500	7,000	7,600	7,000	7,600	7,600	7,600	7,600	7,800	7,600
Ext. Length (Incl. Bumper to Hitch)	22' 9"	27' 11"	28' 10"	29' 5"	29'	30' 1"	31' 11"	32' 11"	32' 7"	34' 1"	34' 5"
Ext. Height (Incl. A/C)	10' 2"	10' 2"	10' 5"	10' 7"	10' 1"	10' 5"	10' 4"	10' 5"	11' 3"	10' 7"	10' 1"
Int. Height (Coach)	78"	78"	78"	78"	78"	78"	78"	78"	78"	78"	78"
Awning Length	18'	18'	16'	20'	16'	16'	20'	20'	18'	18'	18'
Fresh Water Capacity (gal.)	52	52	50	50	50	50	50	50	50	50	50
Grey Water Capacity (gal.)	35	35	35	70	35	70	70	35	35	70	35
Waste Water Capacity (gal.)	35	35	35	35	35	35	35	35	35	35	35

# APEX STANDARDS AND OPTIONS

	UL	NANO		UL	NANO		UL	NANO
<b>VALUE PACKAGE (MANDATORY)</b>			<b>INTERIOR AND DÉCOR</b>					
◀ Vacuum-bonded Laminated Dual Azdel Fiberglass Side Walls	x	x	◀ Casino Bisque Cabinetry	x	x	◀ Below Floor Low Point Drains	x	x
◀ Vacuum-bonded Laminated Dual Azdel Fiberglass Rear Wall	x	x	◀ Shaker Cabinet Door Frames w/ Magnetic Catch	x	x	◀ Foot Flush Toilet	x	x
◀ Vacuum-bonded Laminated Crowned Roof	x	x	◀ Stile and Rail Cabinet Front Construction	x	x	◀ Tub Surround	x	x
◀ Laminated Aluminum Framed Floor	x	x	◀ One-Piece Seamless Edge Countertops	x	x	◀ Glass Shower Door	SM	SM
◀ Fiberglass Front Cap w/LED Lighting and Window	x	x	◀ Congoleum Residential Flooring	x	x	◀ Hand-crafted Wood Medicine Cabinet	x	x
◀ Aluma-cage Construction	x	x	◀ Overhead Bedroom Cabinets w/Side Wardrobes	x	x	<b>EXTERIOR/ CONSTRUCTION</b>		
◀ White Fiberglass Exterior Sidewalls	x	x	◀ Hard Valances w/Night Shades	x	x	◀ Aluma-Cage Construction	x	x
◀ Front Stone Guard	x	x	◀ Pedestal Dinette Table	x	x	◀ Vacuum-bonded, Aluminum Trussed Roof w/Dicor Crossflex Roof Membrane (R-11 - 7½' wide, R-14 - 8' wide)	x	x
◀ Enclosed Underbelly w/Forced Air Heat	x	SM	◀ Large Oversized Booth or U-shaped Dinette w/Sliding Door Storage Access	x		◀ Vacuum-bonded Laminated Dual Azdel Fiberglass Sidewalls (R-11)	x	x
◀ Aluminum Wheels	x	x	◀ 68" Residential Sofa (Most Models)	x	SM	◀ Vacuum-bonded Dual Azdel Fiberglass Rear Wall	x	x
◀ Spare Tire	x	x	◀ LP Leak Alarm	x	x	◀ Laminated Aluminum Framed Floor (R-11)	x	x
◀ Slide Topper Prep	x		◀ Fire Extinguisher	x	x	◀ Corrosion Resistant Powder Coated Frame	x	x
◀ Back-up Camera Mount	x	x	◀ Smoke Alarm	x	x	◀ I-beam Chassis Construction	x	x
◀ Power Tongue Jack	x		◀ Carbon Monoxide Detector	x	x	◀ Heated and Enclosed Underbelly w/Forced Air (Dual Axle Only)	x	SM
◀ Stabilizer Jacks (4)	x	x	◀ Super Bed Storage (Select Models)	x		◀ Gutter Rail	x	x
◀ LP Port	x	x	<b>ELECTRICAL / HEATING/AC</b>			◀ Dual 20 Lb. LP Tanks w/Cover	x	x
◀ 200 Watt Solar Panel w/ 30 AMP Control Charger	x	x	◀ Furnace - Forced Air/Ducts Per Floorplan	x	x	◀ Dual Battery Tray	x	x
◀ 15k BTU A/C (Ducted on 8' wide)	x	x	◀ 15k BTU A/C (Ducted on 8' wide)	x	x	◀ Solid Step	x	x
◀ Ducted/Direct Vent Furnace (Floor Plan Specific)	x	x	◀ 55 Amp Power Center with Auto-detect, Lithium-compatible	x	x	◀ Tinted Safety Glass Radius Windows	x	x
◀ On-Demand Tankless Water Heater (48,000 BTU)	x	x	◀ Outside Receptacle GFI	x	x	◀ Radius Glass Friction Hinge Entry Door	x	x
◀ Hot/Cold Outside Shower	x	x	◀ 200 Watt Solar Panel w/ 30 AMP Control Charger	x	x	◀ Dead Bolt Lock	x	x
◀ Black Tank Flush Kit	x	x	◀ Wireless Bluetooth Speaker	x	x	◀ Radius Slam Latch Baggage Doors	x	
◀ Power Awning w/Lighting	x	x	◀ Detachable Marine Style Power Cord	x	x	◀ Break Away Switch	x	x
◀ Swing Away Assist Handle	x	x	◀ USB Chargers	x	x	◀ EasyLube	x	x
◀ Radius Glass Friction Hinge Entry Door	x	x	◀ 50 Amp Service Standard (Select Models)	SM		◀ Radial Tires	x	x
◀ Solid Step	x	x	<b>GALLEY</b>			◀ Frame Receiver Prep	SM	SM
◀ Slam Latch Baggage Door Catches	x		◀ 8 Cu. Ft. 12V Refrigerator	x	x	◀ Battery Disconnect Switch	x	x
◀ LED Motion Sensor Light in Exterior Storage Area	x		◀ Air Fryer	x		◀ Schwintek/Rack and Pinon Slide Room System (Per Floor Plan)	x	x
◀ Hard Valances w/Night Shades Throughout	x	x	◀ Flush-mount 2-Burner Stovetop		x	◀ Cast Iron Griddle and Prep Bar	x	x
◀ LED Interior Lighting Throughout	x	x	◀ Flush-mount 3-Burner Stovetop	x		◀ On-The-Go Ladder Prep	x	x
◀ Microwave	x	x	◀ Power LED Lighted Range Hood	x		<b>OPTIONS</b>		
◀ Lighted, Flush-mount, 3-Burner High Output Range w/ Air fryer	x		◀ Microwave	x	x	◀ Frameless Dark Tint Windows	x	
◀ 8 Cu. Ft. 12V Refrigerator	x	x	◀ Stainless Steel Single Bowl Sink w/Flush-mount Cover	x	x	◀ Stargazer		x
◀ Stainless Steel Single Bowl Sink w/Flush-mount Cover	x	x	◀ One-Piece Seamless Edge Countertops	x	x	◀ 50 Amp Service w/Second (Forced) 13.5K BTU A/C (Standard 243 FKS and Larger)	x	
◀ Access Doors Under Dinette	SM	SM	◀ Matte Black Hardware	x	x	◀ 12v Heat Pads		x
◀ Interior Convenience Center	x	x	<b>BATH AND WATER</b>			◀ Theater Seating	SM	
◀ Digital TV Antenna w/Cable Hook-ups and WiFi Capability	x	x	◀ On-Demand Tankless Water Heater (48,000 BTU)	x	x	◀ Goodyear® All-Terrain Tires		x
◀ USB Charging Station	x	x	◀ Power Bath Vent	x	x	◀ Murphy Bed		SM
◀ TV	x		◀ Water Heater Bypass Valve	x	x			
◀ Hide-A-Bed Sofa (Deep slides only)	x		◀ On-Demand Water Pump	x	x			
◀ Tub Surround	x	x						
◀ Skylight in Bath	x	x						
◀ Mattress with Cover	x	x						

# APEX CONSTRUCTION

Apex features the combination of environmentally friendly Azdel wall boards inside, and out. Using Alomicage Construction maximizes strength while minimizing weight. These Ultralite Travel Trailers are designed for towing by today's half-ton trucks, and SUVs. From 18' to 34'. All units are available under 6,800 lbs.

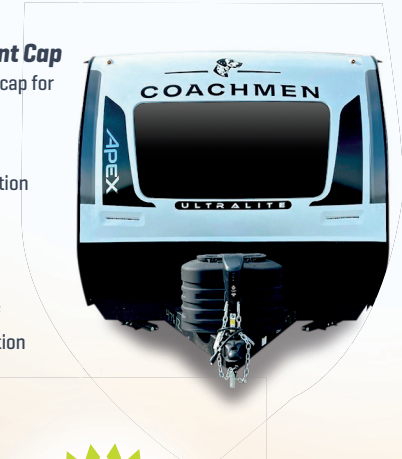
## Construction Features

1. 3M Breathable graphics
2. Tinted, safety glass windows
3. Welded aluminum structure, vacuum-bonded sidewalls and rear wall, laminated floor
4. Aluminum reinforced vacuum-bonded roof
5. Dicor Crossflex roofing membrane
6. Azdel composite exterior/interior sidewall and rear wall panels
7. Aerodynamic front profile with fiberglass front cap and integrated window
8. [2] 20 lb. LP tanks
9. Insulated slam latch doors with magnetic hold-ups [N/A Nanos]
10. Smooth exterior fiberglass skin
11. Aluminum framed openings
12. Fully enclosed, heated underbelly [Double axle models]
13. Fully welded tubular aluminum floor structure
14. Slide system
15. Residential Style linoleum flooring
16. Powder E-coated, welded I-beam frame with full-depth crossmembers
17. SuperLube axles
18. Radial tires



## Fiberglass Front Cap

- ¾ Front fiberglass cap for superior strength
- Automotive glass front window with superior UV protection
- Front stone guard
- Integrated LED accent lights
- Vacuum Bonded Sidewalls and Roof
- Stronger construction
- Lighter weight



**Apex is proud to be one of three products to receive the Emerald Level Certification, the highest rated level possible.**

As a Certified Green RV, APEX utilizes effective production techniques in combination with healthy materials, plus efficient usage of energy and water to produce a high quality RV with less environmental impact.

Check us out at:  
[coachmenrv.com/travel-trailers/apex](http://coachmenrv.com/travel-trailers/apex)

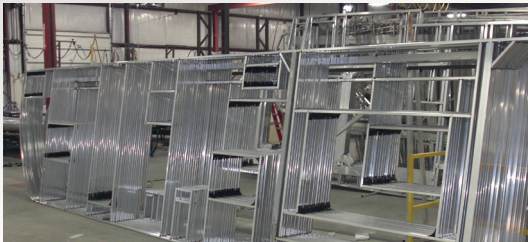
**LIGHTWEIGHT DURABILITY**



*Double axle floor plans only.*



**Lower Center of Gravity for Better Towability**



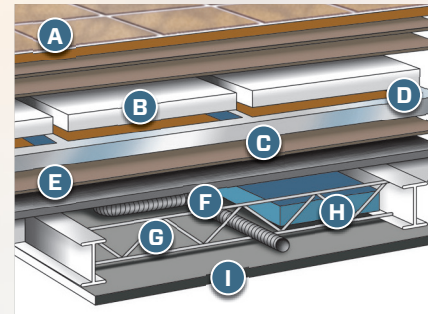
## Welded Aluminum Framing

Durable, lightweight aluminum cage – individually framed cut-outs to make for stronger sidewalls and reduce water leaks.



## Aluminum Reinforced Vacuum-bonded Roof

The aluminum framed, laminated roof is lighter than the competition, rigid and fully walkable.



## Six Layer Laminated Floor

- A Residential durable insulated floor covering
- B Double layer Luan plywood top decking
- C Welded aluminum frame
- D Block foam structural insulation
- E Luan plywood bottom decking
- F Darco waterproof floor wrap
- G Cross member support
- H Holding tanks
- I Heated and enclosed underbelly [Double axle models]

# EXPERIENCE YOUR OWN ULTRALITE ADVENTURE

Versatile Apex Travel Trailers provide a perfect home base, wherever the road leads.



THE ENTIRE APEX LINEUP IS PERFECT FOR SMALLER TOW VEHICLES.

# APEX



423 N. Main Street · P.O. Box 30 · Middlebury, IN 46540. To learn more about Coachmen RV and our products and see how Coachmen is making the easy life easier, visit <https://coachmenrv.com/brand/apex>



### Coachmen Interactive Mobile Manuals

Download your Coachmen mobile app or visit our dynamic online manual to enhance your ownership experience. These interactive options provide incredible ease and insight into use, maintenance and enjoyment of your Coachmen product. Ranging from "How-To" videos, pictures and illustrations of various components, systems and features to fully searchable content and downloadable PDFs for individual component owner's manuals, answers are always just a click away.

**FREE MEMBERSHIP**  
to Forest River Owners' Group



[www.forestriverfrog.com](http://www.forestriverfrog.com)



**Learn More:**  
Scan this barcode using a QR reader on your smart phone to learn more about Forest River.



[WWW.COACHMENRV.COM/APEX](http://WWW.COACHMENRV.COM/APEX)

YOUR DEALER



### PRE-DELIVERY INSPECTION FACILITY

20,000 square feet of quality assurance. The bare essentials for a premium product. This state-of-the-art facility gives immediate daily feedback to production for quality assurance in every unit built.



### 24/7 EMERGENCY ROADSIDE ASSISTANCE WITH VEHICLE PURCHASE\*

TOWING  
JUMP-STARTS  
TIRE CHANGES  
FLUID DELIVERY  
LOCKOUT  
SERVICE

WINCH-OUT  
MOBILE MECHANIC  
TECHNICAL  
SUPPORT  
DEALER LOCATOR  
SERVICES



\*VALID FOR 1 YEAR FROM DATE OF PURCHASE

**SPECIFICATION DEFINITIONS** **GVWR (Gross Vehicle Weight Rating)** - is the maximum permissible weight of the unit when fully loaded. It includes all weights, inclusive of all fluids, cargo, optional equipment and accessories. For safety and product performance do NOT exceed the GVWR. // **GAWR (Gross Axle Weight Rating)** - is the maximum permissible weight, including cargo, fluids, optional equipment and accessories that can be safely supported by a combination of all axles. // **UVW (Unloaded Vehicle Weight)\*\*** - is the typical weight of the unit as manufactured at the factory. It includes all weight at the unit's axle(s) and tongue or pin and LP Gas. The UVW does not include cargo, fresh potable water, additional optional equipment or dealer installed accessories. \*Estimated average based on standard build optional equipment. // **CCC (Cargo Carrying Capacity)\*\*** - is the amount of weight available for fresh potable water, cargo, additional optional equipment and accessories. CCC is equal to GVWR minus UVW. Available CCC should accommodate fresh potable water (8.3 lbs per gallon). Before filling the fresh water tank, empty the black and gray tanks to provide for more cargo capacity. \*\* Estimated average based on standard build optional equipment. Each Forest River RV is weighed at the manufacturing facility prior to shipping. A label identifying the unloaded vehicle weight of the actual unit and the cargo carrying capacity is applied to every Forest River RV prior to leaving our facilities. The load capacity of your unit is designated by weight, not by volume, so you cannot necessarily use all available space when loading your unit.

All information contained in this brochure is believed to be accurate at the time of publication. However, during the model year, it may be necessary to make revisions and Forest River, Inc., reserves the right to make all such changes without notice, including prices, colors, materials, equipment and specifications as well as the addition of new models and the discontinuance of models shown in this brochure. Therefore, please consult with your Forest River dealer and confirm the existence of any materials, design or specifications that are material to your purchase decision. Litho. U.S.A. FOR 2464 P&W: 2024.09.02