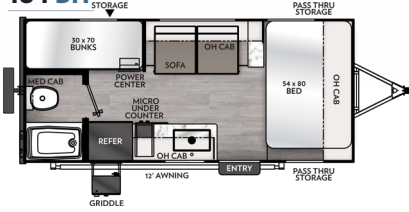


APEX

NANO OFF GRID

LIVE LIFE LIGHTER

184 BH



WEIGHT: 3466

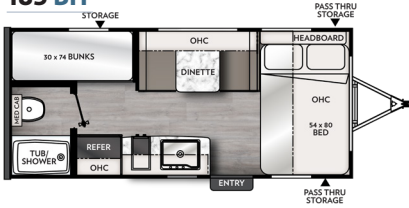
STANDARD SOLAR PANELS

- 200 W. SOLAR PANEL (ROOF MOUNTED)
- 30 AMP CONTROLLER

INCLUDED ON EVERY FLOOR PLAN



185 BH



WEIGHT: 3366

186 BH



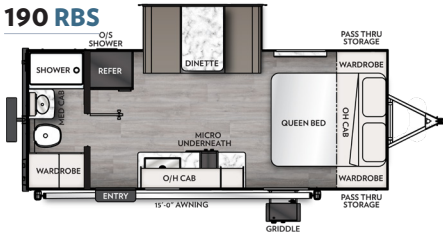
WEIGHT: 3586

187 RB



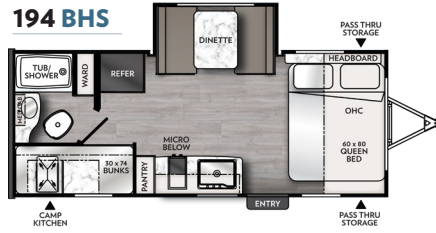
WEIGHT: 3318

190 RBS



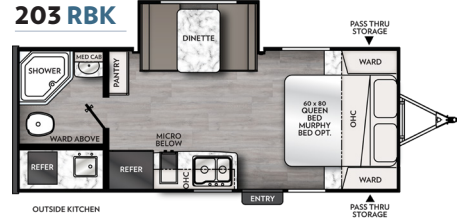
WEIGHT: 3670

194 BHS



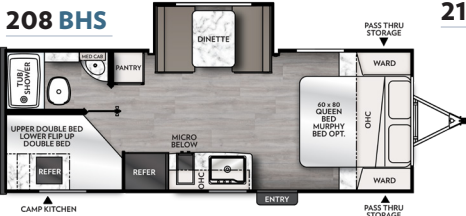
WEIGHT: 3850

203 RBK



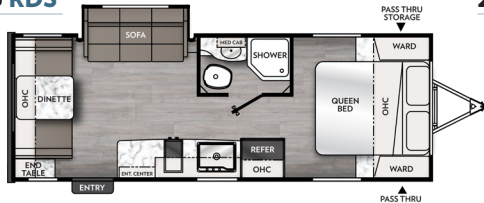
WEIGHT: 3916

208 BHS



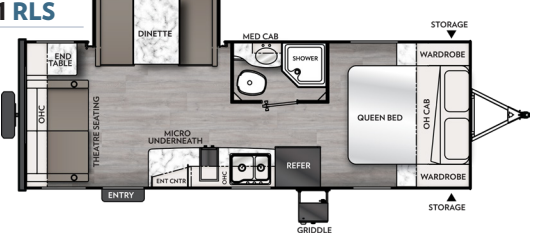
WEIGHT: 4220

213 RDS



WEIGHT: 4154

221 RLS



WEIGHT: 4220



423 N. Main Street • P.O. Box 30 • Middlebury, IN 46540
To learn more about Coachmen RV and our products and see how Coachmen is making the easy life easier, visit coachmenrv.com/models/apex-ultra-lite



Each Forest River RV is weighed at the manufacturing facility prior to shipping. A label identifying the unloaded vehicle weight of the actual unit and the cargo-carrying capacity is applied to every Forest River RV prior to leaving our facilities. The load capacity of your unit is designed by weight, not by volume, so you cannot necessarily use all available space when loading your unit. All information contained in this brochure is believed to be accurate at the time of publication. However, during the model year it may be necessary to make revisions and Forest River, Inc., reserves the right to make all such changes without notice, including prices, colors, materials, equipment and specifications as well as the addition of new models and the discontinuance of models shown in this brochure. Therefore, please consult with your Forest River dealer and confirm the existence of any materials, design or specifications that are material to your purchase decision. ©2021 Apex by Coachmen RV, a Division of Forest River, Inc., a Berkshire Hathaway company. All rights reserved. CHM 2469 9/24