

APEX

ULTRALITE & NANO TRAVEL TRAILERS

LIVE LIFE LIGHTER

DESIGNED FOR TOWING BY TODAY'S HALF-TON TRUCKS, MINIVANS AND SUVs. ALL UNITS ARE AVAILABLE UNDER 6,500 LBS. IN 18' - 34' LENGTHS.

APEX CONSTRUCTION

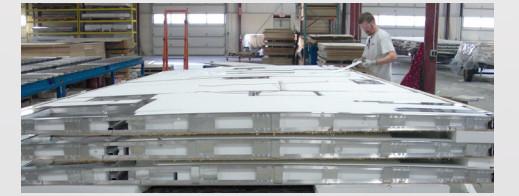
Construction Features

- 3M Breathable graphics
- Tinted, safety glass windows
- Welded aluminum structure, vacuum-bonded sidewalls and rear wall, laminated floor
- Aluminum reinforced vacuum-bonded roof
- Dicor Crossflex roofing membrane
- Azdel composite exterior/interior sidewall and rear wall panels
- Aerodynamic front profile with fiberglass front cap and integrated window
- (2) 20 lb. LP tanks
- Insulated slam latch doors with magnetic hold-ups (N/A Nanos)
- Smooth exterior fiberglass skin
- Aluminum framed openings
- Fully enclosed, heated underbelly (Double axle models)
- Fully welded tubular aluminum floor structure
- Slide system
- Congoleum® DiamondFlor flooring
- Powder E-coated, welded I-beam frame with full-depth crossmembers
- Dexter® E-Z Lube® axle hubs (Nano) SuperLube axles by Lippert (Ultralite)
- Radial tires

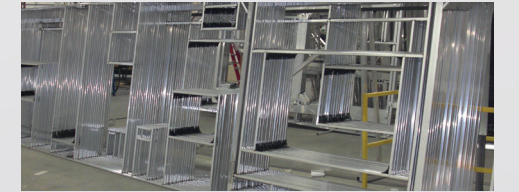


Dicor Crossflex Synthetic Thermoplastic Roofing System

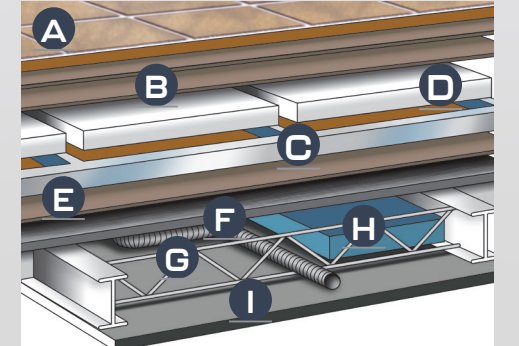
- Extreme tear and puncture resistance
- High solar reflectance
- High thermal emissivity
- Lightweight
- Flexible



Aluminum Reinforced Vacuum-bonded Roof



Welded Aluminum Framing



Six Layer Laminated Floor

- A Residential durable insulated floor covering
- B Double layer Luan plywood top decking
- C Welded aluminum frame
- D Block foam structural insulation
- E Luan plywood bottom decking
- F Darco waterproof floor wrap
- G Cross member support
- H Holding tanks
- I Heated and enclosed underbelly (Double axle models)



Apex is proud to be one of three products to receive the **Emerald Level Certification**, the highest rated level possible.

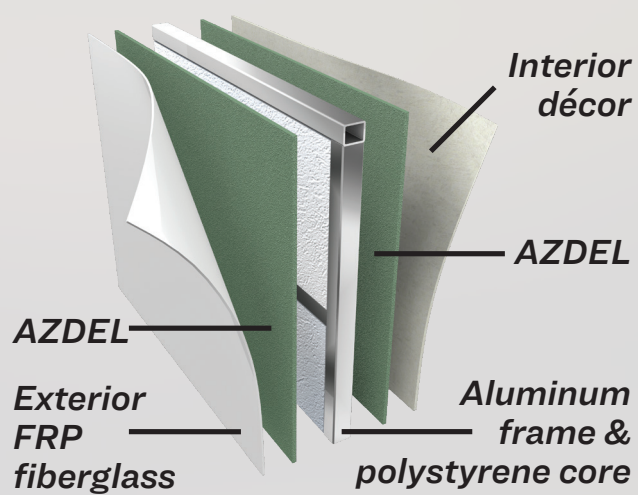
As a Certified Green RV, APEX utilizes effective production techniques in combination with healthy materials, plus efficient usage of energy and water to produce a high quality RV with less environmental impact.



Lower Center of Gravity for Better Towability

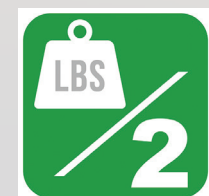


Double axle floor plans only.

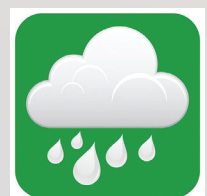


DOUBLE THE AZDEL, DOUBLE THE BENEFITS.

By using AZDEL for both the exterior and interior panels, we have doubled our benefits for overall weight reduction, temperature control, sound absorption, longevity, and low VOCs. Azdel composite panels are produced using a patented blend of polypropylene and fiberglass to create a durable, lightweight, water and temperature resistant, odorless and eco-friendly wall that will increase the life of your RV.



Weight matters 50% lighter than wood



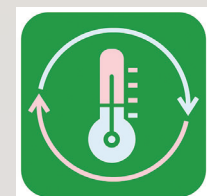
Let it rain - no mold, rot, mildew, warping or delamination



Free of formaldehyde, toxic odors and chemicals



Longer RV life



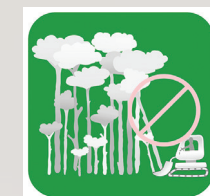
Unaffected by changes in temperature & humidity



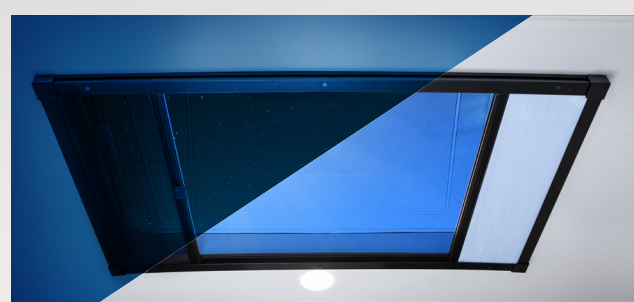
Twice the thermal insulation of plywood



Quieter RVs



No deforestation

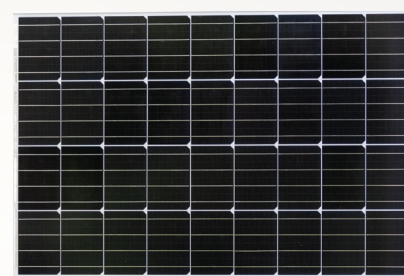


APEX STAR-GAZER

The all new Star-Gazer allows you to bring in more natural light and greater air flow. For those wanting to keep out insects or sleep in on the weekends, the Star-Gazer will also feature a screen and blackout shade that are very user friendly. (Optional on Nano floorplans. N/A 185 BH)

Std. on Select Floorplans

STANDARD OFF-THE-GRID ESSENTIALS



200 Watt Solar Panel with 30 AMP Control Charger to Battery (Std. with Mandatory Off-Grid Package on Nano, Std. Ultra Lite)



Optional 12V Tank Heater Pads (Nano models)



Dual LP Tanks with Cover (2) 20 lb. Tanks with Cover for Longer Camping Time (Std. with Mandatory Off-Grid Package on Nano, Std. Ultra Lite)



12 Volt Outlets & USB Charger Pass-thru, Outside Kitchen and Bedside (Std. with Mandatory Off-Grid Package on Nano, N/A Ultra Lite)



High Volume Power Roof Vent 3-Speeds, Quiet Operation, 9.3 CFM Air Circulation (Std. with Mandatory Off-Grid Package on Nano, N/A Ultra Lite)

BRAND-NEW FEATURES FOR THE 2024 MODEL YEAR



Bluetooth Portable Speakers



Frame Receiver Prep



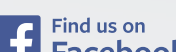
Outside Griddle



423 N. Main Street • P.O. Box 30 • Middlebury, IN 46540
To learn more about Coachmen RV and our products and see how Coachmen is making the easy life easier, visit coachmenrv.com/travel-trailers/apex-ultra-lite
Check us out at: coachmenrv.com/travel-trailers/apex



COACHMEN OWNERS ASSOCIATION
FREE MEMBERSHIP
www.coachmenowners.com



Find us on Facebook



www.ForestRiverBuyLocal.com



Learn More
Scan this barcode using a QR Reader on your smart phone to learn more about Forest River.



A Berkshire Hathaway company.

Each Forest River RV is weighed at the manufacturing facility prior to shipping. A label identifying the unloaded vehicle weight of the actual unit and the cargo carrying capacity is applied to every Forest River RV prior to leaving our facilities. The load capacity of your unit is designated by weight, not by volume, so you cannot necessarily use all available space when loading your unit. All information contained in this brochure is believed to be accurate at the time of publication. However, during the model year, it may be necessary to make revisions and Forest River, Inc. reserves the right to make all such changes without notice, including prices, colors, materials, equipment and specifications as well as the addition of new models and the discontinuance of models shown in this brochure. Therefore, please consult with your Forest River dealer and confirm the existence of any materials, design or specifications that are material to your purchase decision. ©2022 Apex by Coachmen RV, a Division of Forest River, Inc., a Berkshire Hathaway company. All rights reserved. 1/22